

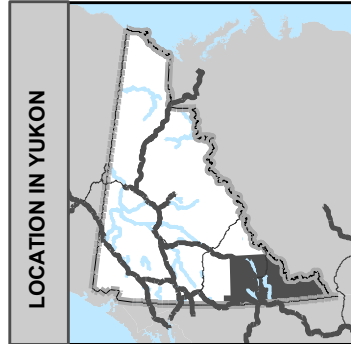
# Electoral District

**Watson Lake**

**ED17**

Map 2 of 2

## Circonscription électorale



## POLLING DIVISIONS - 3/3

- PD 1
- PD 2
- PD 3

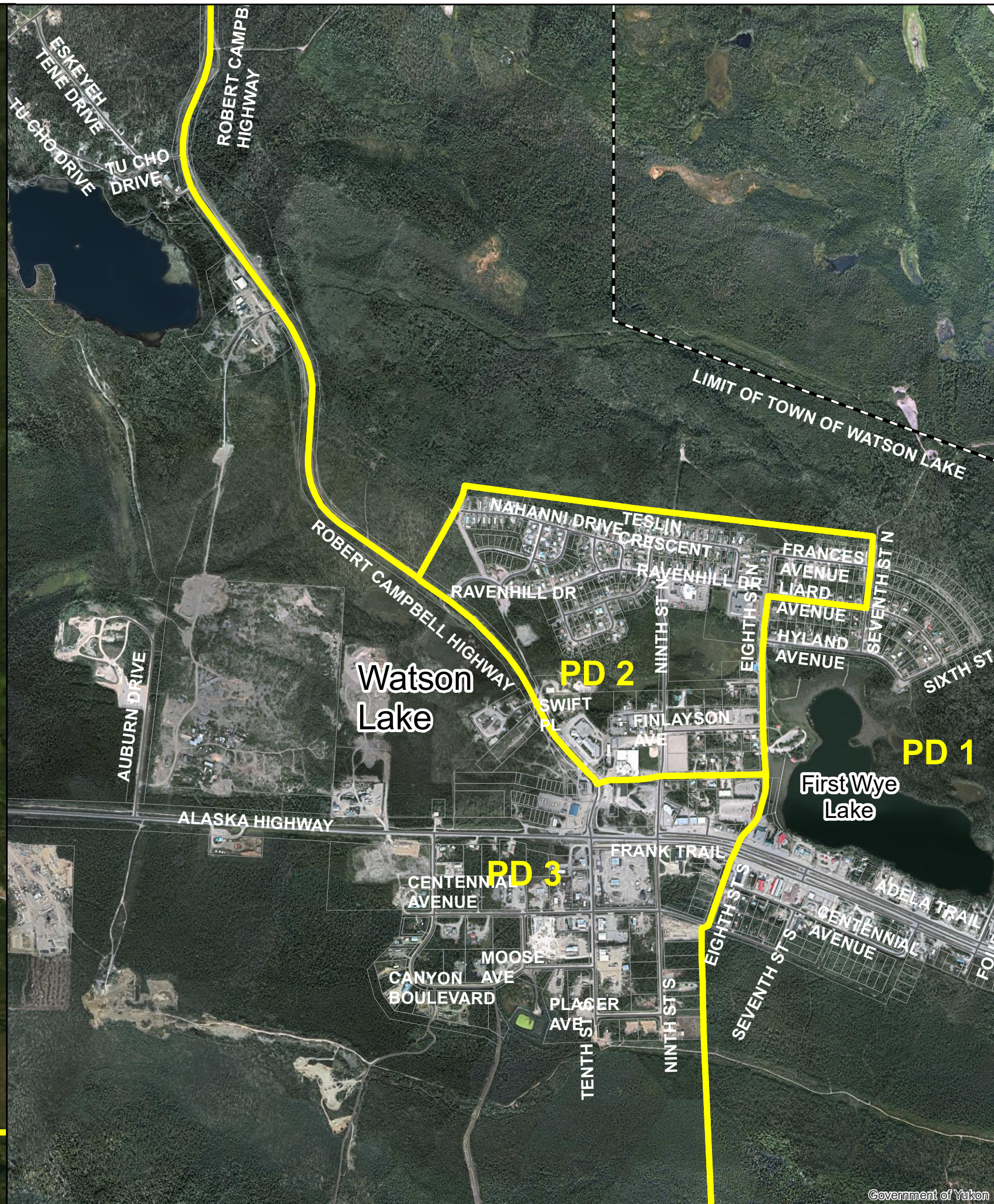
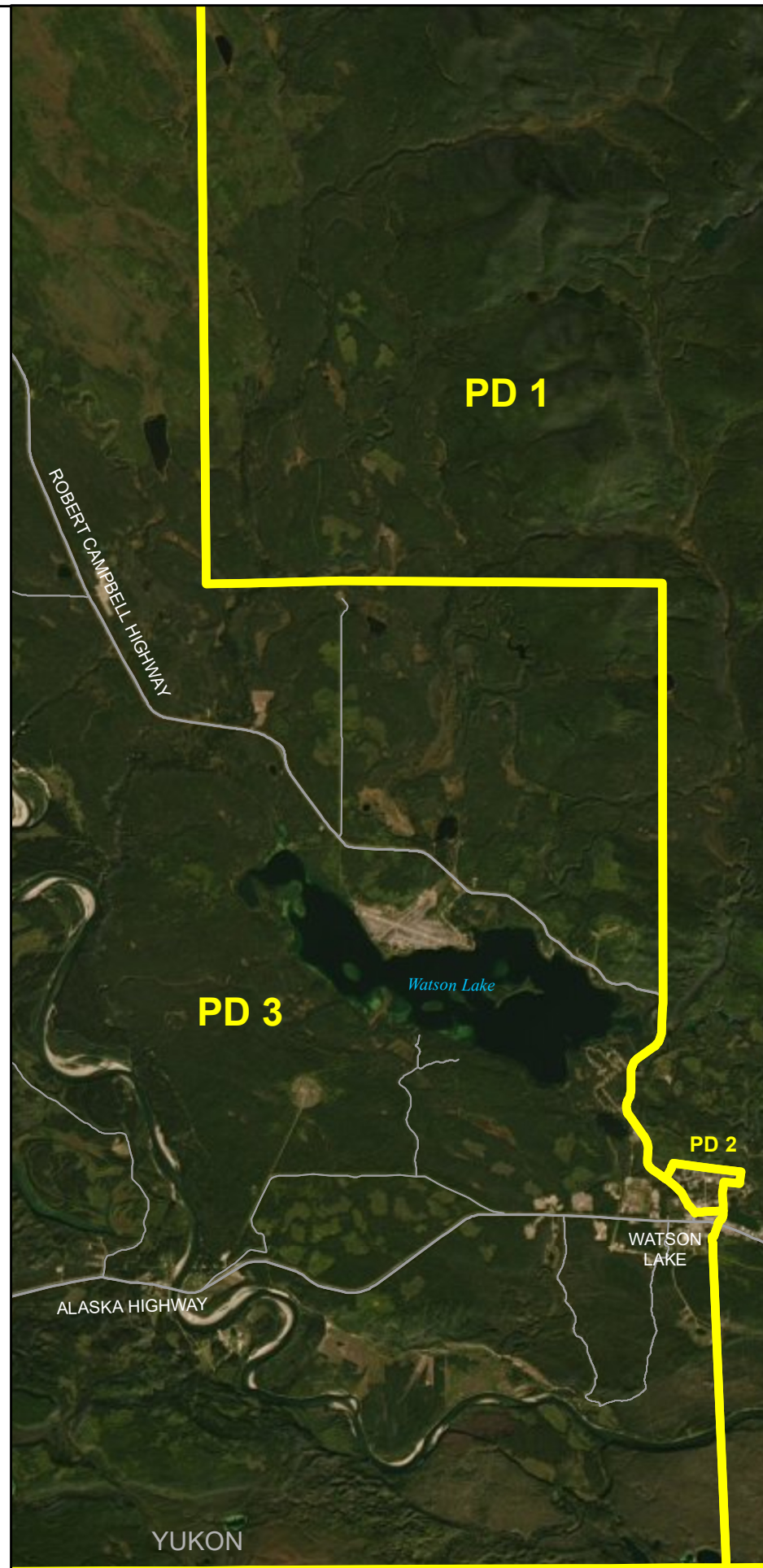


2703 2nd Ave  
PO Box 2710 (A-9)  
Whitehorse, Yukon Y1A 2C6

electionsyukon.ca  
info@electionsyukon.ca  
1 (866) 668-8683 (toll free)

Published by the Chief Electoral  
Officer of Yukon

Revised: Feb 2021



Source: Esri, Maxar, GeoEye, Earthstar Geographics, CNES/Airbus DS, USDA, USGS, AeroGRID, IGN, and the GIS User Community