

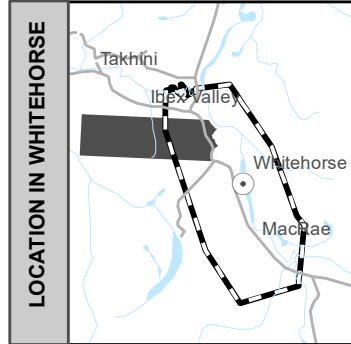
# Electoral District

**Porter Creek  
North**

**ED11**

Map 1 of 2

## Circonscription électorale



## POLLING DIVISIONS - 6/6

- PD 1
- PD 2
- PD 3
- PD 4
- PD 5
- PD 6

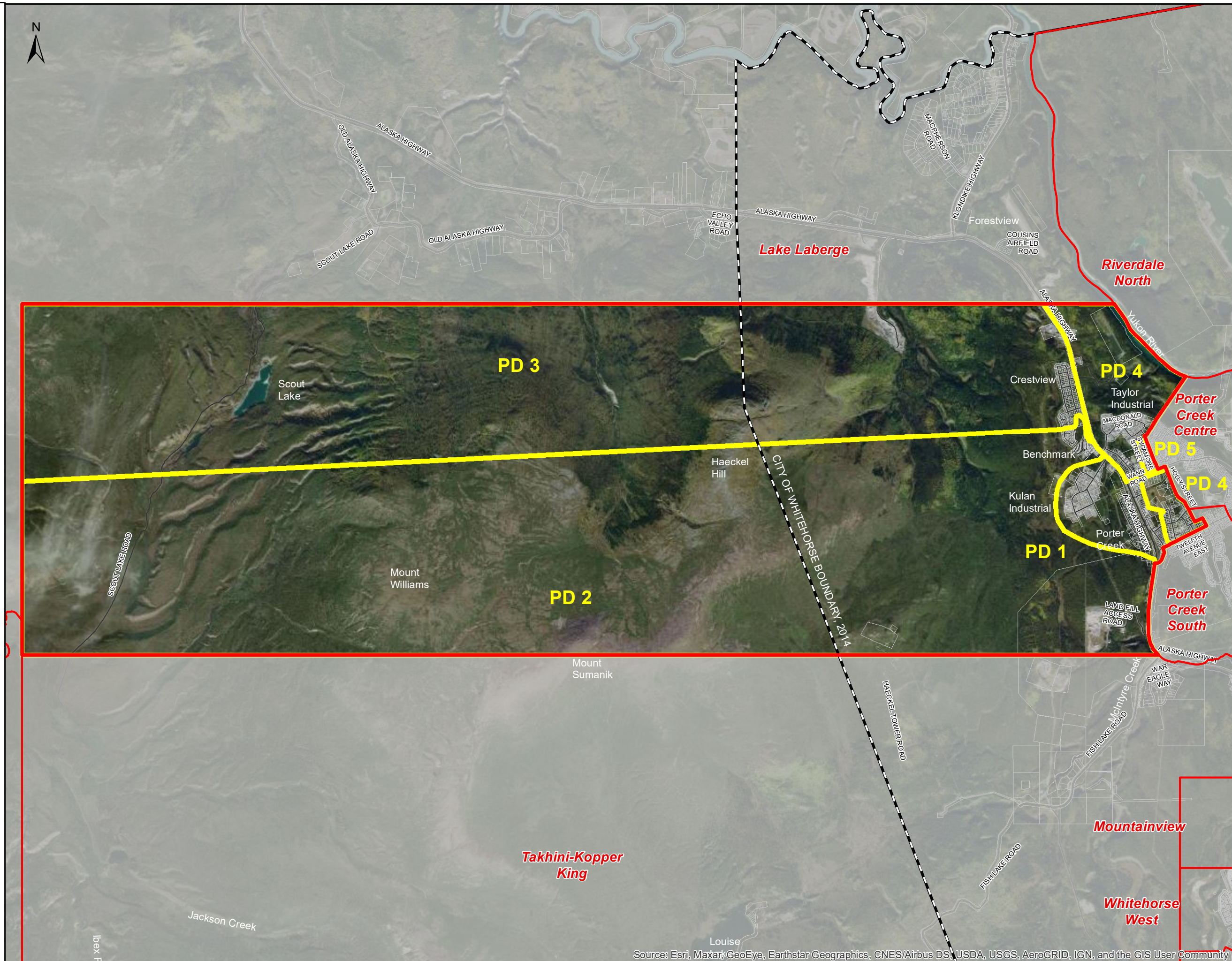


2703 2nd Ave  
PO Box 2710 (A-9)  
Whitehorse, Yukon Y1A 2C6

electionsyukon.ca  
info@electionsyukon.ca  
1 (866) 668-8683 (toll free)

Published by the Chief Electoral  
Officer of Yukon

Revised: Feb 2021



Source: Esri, Maxar, GeoEye, Earthstar Geographics, CNES/Airbus DS, USDA, USGS, AeroGRID, IGN, and the GIS User Community